

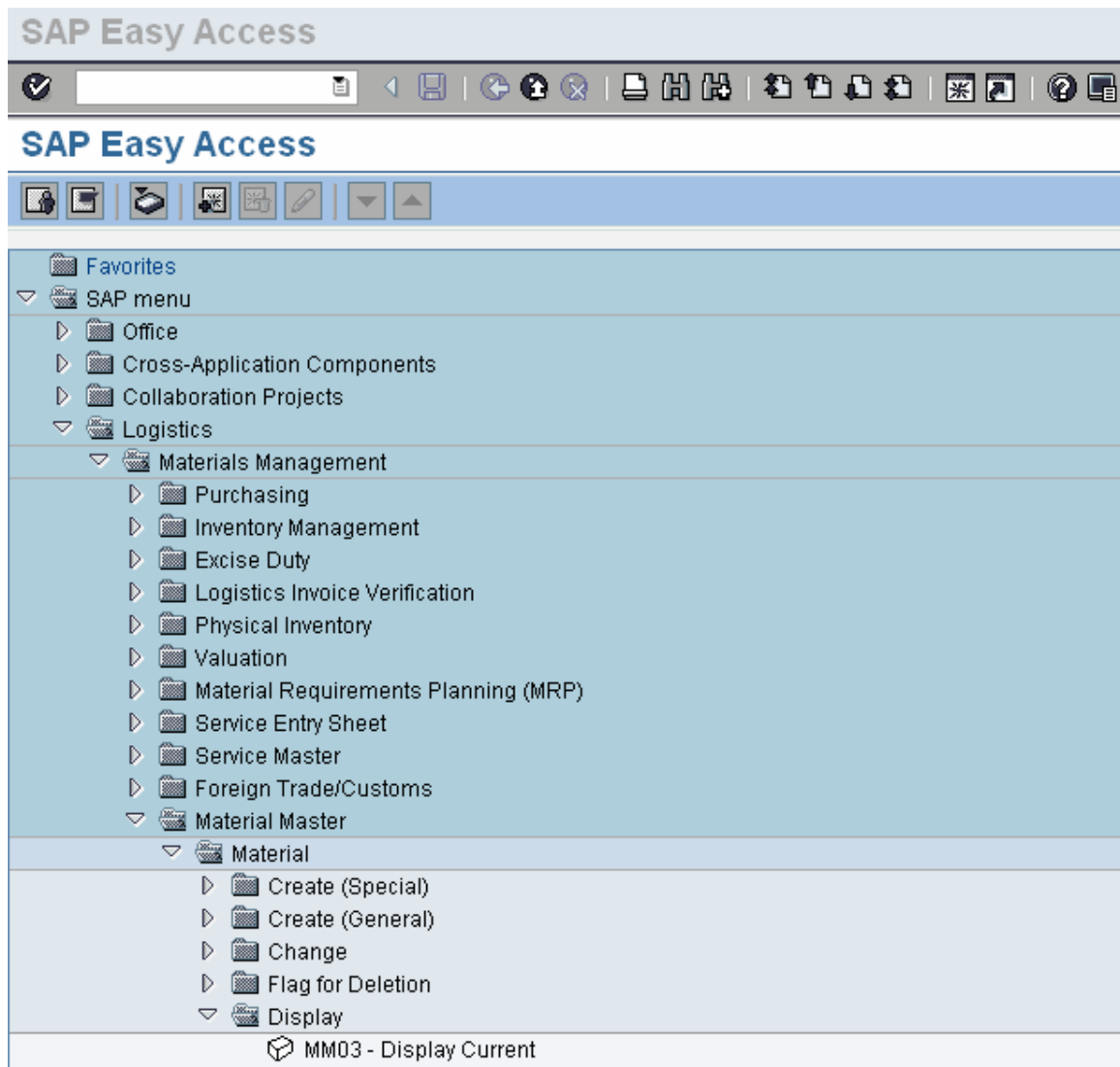
# Availability Check User Guide

This user guide shows how availability check is used in Shipping


## A. Material Master Maintenance

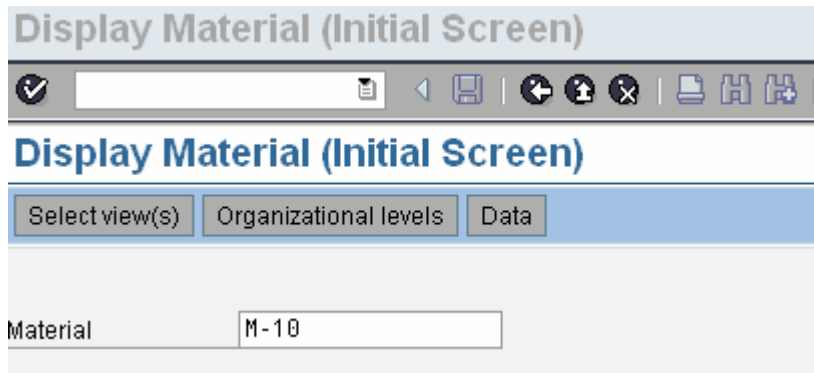
Material master record needs to be checked for correct checking group.


Menu Path: Logistics → Materials Management → Material Master → Material → Display → MM03 – Display Current

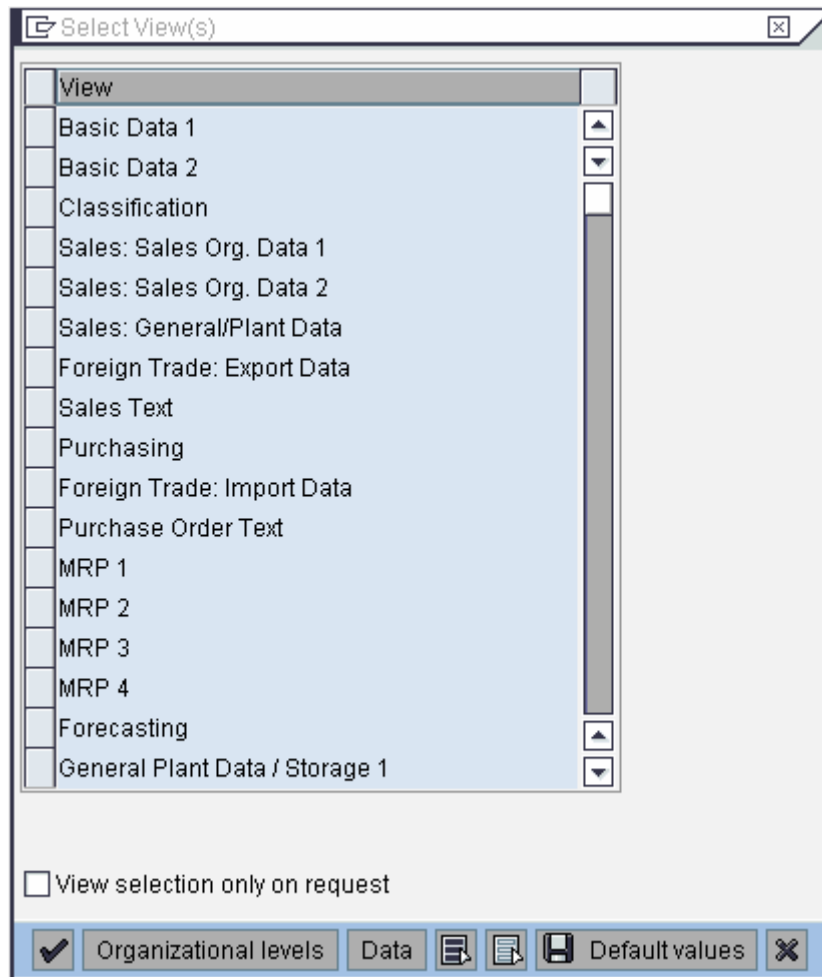


Click 

Enter Material 'M-10' and click 



Select **Sales: General/Plant Data** in the pop-up and click 



Enter Plant '3200' in pop-up and click 

Organizational Levels

Organizational levels

Plant 3200

Sales Org.

Distr. Channel

Org. levels/profiles only on request

Select view(s)

The Checking group '02' is visible in this view.

Display Material M-10 (Trading goods)

Display Material M-10 (Trading goods)

Additional data Organizational levels

Sales: sales.org. 2  Sales: general/plant Foreign trade export Sales text

Material M-10 Flatscreen MS 1775P

Plant 3200 Atlanta

General data

Base Unit of Measure PC piece(s) Replacement part

Gross weight 20.50 KG Qual.f.FreeGoodsDis.

Net weight 20.50 Material freight grp

Availability check  02 Individual reqmt  Appr.batch rec. req.

Batch management

Shipping data (times in days)

Trans. grp 0001 On palettes LoadingGrp 0001 Crane

Setup time 0.00 Proc. time 0.00 Base qty 0 PC

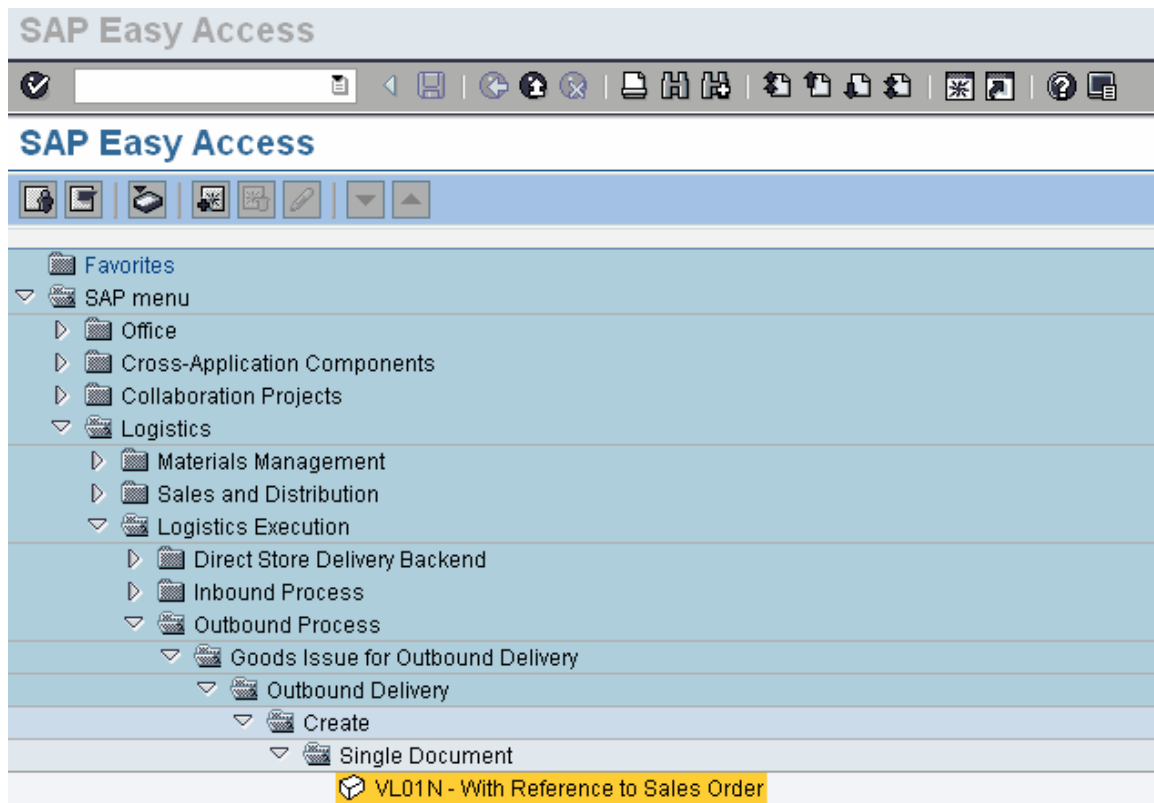
## B. Availability Check in Delivery Creation

We will see availability check overview in delivery creation now


Prerequisite:

Existing order created with item having relevant schedule line for delivery.

Menu Path: Logistics → Logistics Execution → Outbound Process → Goods Issue for Outbound Delivery → Outbound Delivery → Create → Single Document → VL01N – With Reference to Sales Order



Click 

Enter Shipping Point, Selection date, Order No and click 

**Create Outbound Delivery with Order Reference**

With Order Reference | W/o Order Reference | Post goods issue

Shipping point  Shipping Point Atlanta

**Sales order data**

Selection date	<input type="text" value="06.12.2006"/>
Order	<input type="text" value="10643"/>
From item	<input type="text"/>
To item	<input type="text"/>

**Predefine delivery type**

Delivery Type	<input type="text"/>
---------------	----------------------

Following delivery creation screen is displayed



**Availability Overview**

Material: M-10  
 Flatscreen MS 1775P

Plant: 3200      Avail. check: 02      Check.rule: B

MRP area: 3200       With reqmts qty

Base Unit: PC

**Totals display**

Receipts	573	Confirmed issues	68
Issues	68		

**ATP situation**

Date	MRP ...	MRP element data	Rec./reqd qty	Confirmed	Cum. ATP qty
06.12.2006	Stock		369		301
17.11.2003	Deliv.	Totals record	68-	68	301
03.03.2004	PchOrd	Totals record	51		352
03.09.2004	PchOrd	Totals record	51		403
21.09.2004	PchOrd	Totals record	51		454
25.09.2004	PchOrd	Totals record	51		505
06.12.2006	SimReq	Simulated requirements	1-		505
06.12.2006	StLcSt	0001	369		301
17.11.2003	Deliv.	Totals record	68-	68	301
03.03.2004	PchOrd	Totals record	51		352
03.09.2004	PchOrd	Totals record	51		403

Current page / Total: 1 / 2

The screen would give the cumulative receipts and issues and the available stock situation for the material in the plant.

The Checking Group and checking rule used for availability is also displayed.

The scope of check can be seen in this screen by clicking on


**Scope of check**

The scope of check for availability gets displayed.

Display Scope of Check

Availability check: 02 Individual reqmt  
 Checking rule: B SD delivery

<b>Stock overview</b> <input type="checkbox"/> Include safety stock <input type="checkbox"/> Incl.stock in transfer <input type="checkbox"/> Incl.quality insp. stock <input type="checkbox"/> Include blocked stock <input type="checkbox"/> Include restricted-use stock <input type="checkbox"/> W/o subcontracting	<b>In/outward movements</b> <input checked="" type="checkbox"/> Incl.purchase orders <input type="checkbox"/> Incl. purch.requisitions <input type="checkbox"/> Incl. dependent reqs <input checked="" type="checkbox"/> Include reservations <input type="checkbox"/> Include sales reqmts <input checked="" type="checkbox"/> Include deliveries <input type="checkbox"/> Incl.ship.notificat.  Incl.depen.reservat. <input type="checkbox"/> Do not check Incl.rel.order reqs <input type="checkbox"/> Do not check Incl. planned orders <input type="checkbox"/> Do not check Incl. production orders <input type="checkbox"/> Do not take into a...
<b>Replenishment lead time</b> <input checked="" type="checkbox"/> Check without RLT	<b>Receipts in the past</b> Include receipts from past and future
<b>Storage location inspection</b> <input type="checkbox"/> No storage location inspection	

Click on icon 

Click on  to save delivery.

Availability check scope is displayed in delivery.